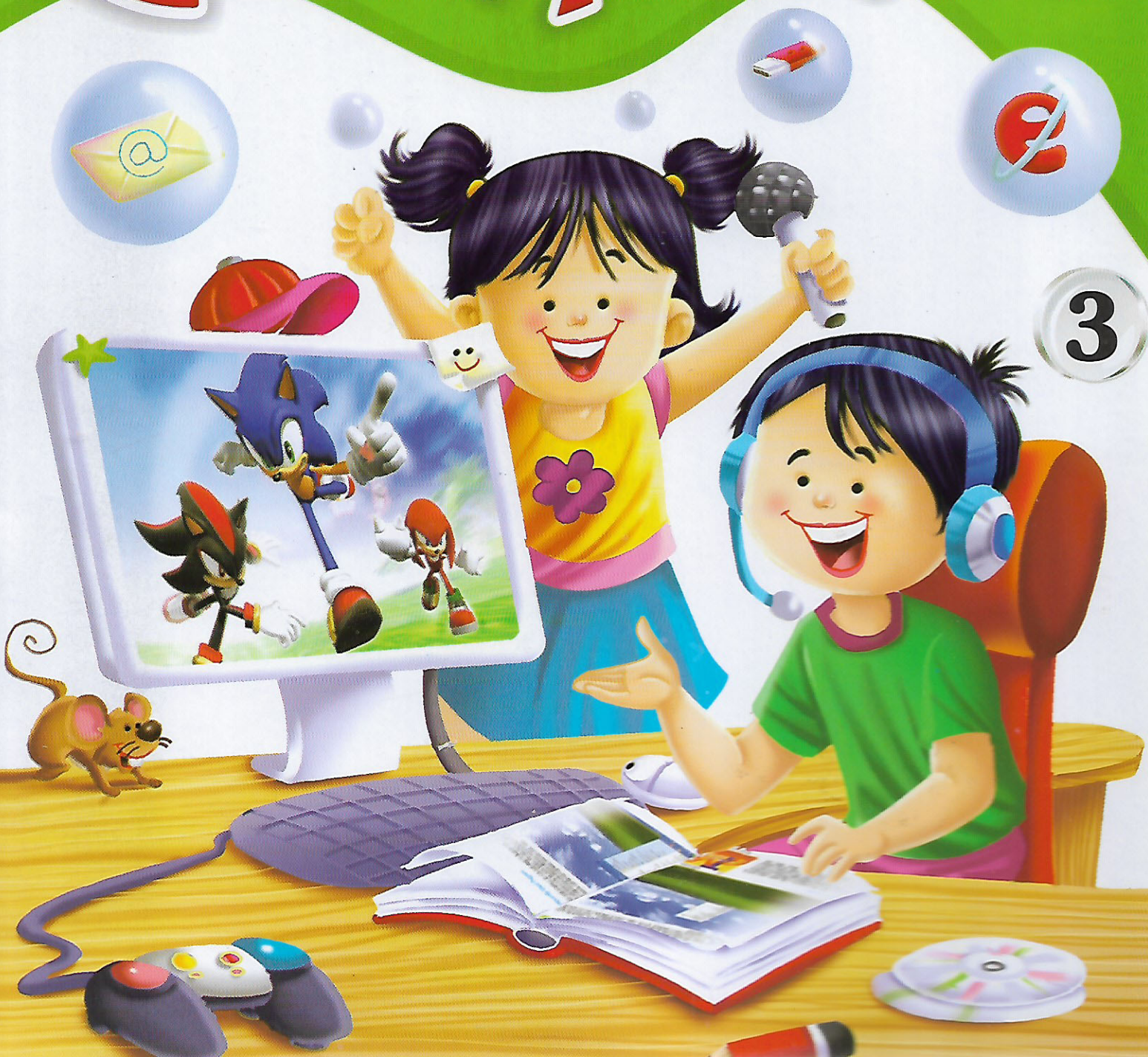


Evershine

Gateway to Bright Future

Learning

Computer



3



Written by:
Simran Trehan
S.K. Pandey



Copyright © Evershine Publishers

All right reserved.
No part of this publication can be
reproduced in any form or by any means without
the prior written permission of the publishers

Designed by:
Manthan Technologies

Published by:
Evershine Publishers

Soni House, WZ-348, Nangal Raya, New Delhi-110046
PH.: 28111758, 28113958, Fax- 28112353
Mobile: 9868877950, 9560408043
E-mail: evershinepub@gmail.com





PREFACE

Computer has assumed such an important place in modern day-life that we can not imagine a smooth and successful life minus it. Therefore, it becomes necessary to get a student equipped with computer and educate in it.

It is not easy to prepare a text book on this complicated subject in a simple manner thus I have tried to include in these books, the latest information about computers and covered topics, like windows, networking, computer virus, multimedia, Internet fundamentals and other computer related information.

The need of modern day education was kept in mind while designing the syllabus. The author will be obliged to entertain any suggestions from the learned faculty and the students.



Author





CONTENTS

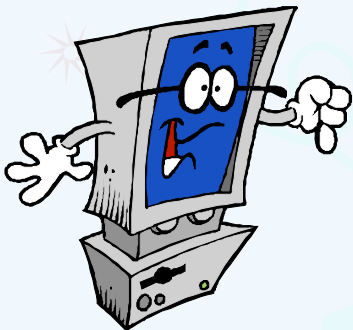
1. Me and My Memory	3
2. Software and Hardware	11
3. Input-Output Device	16
4. Windows	21
5. Windows Utilities	29
6. Introduction to Logo	37
7. More About Accessories	46



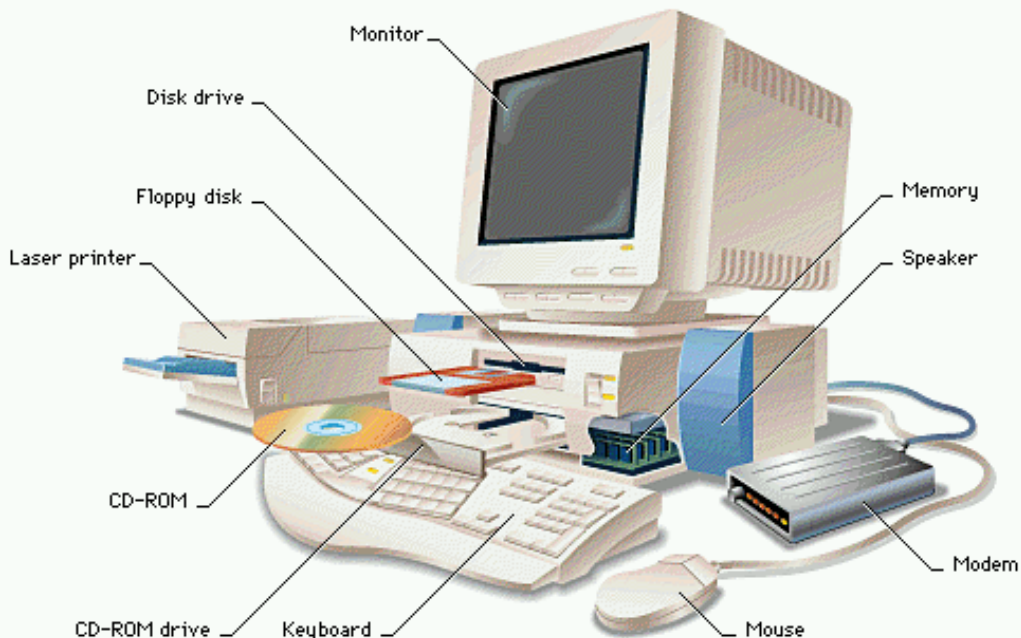
1 Chapter

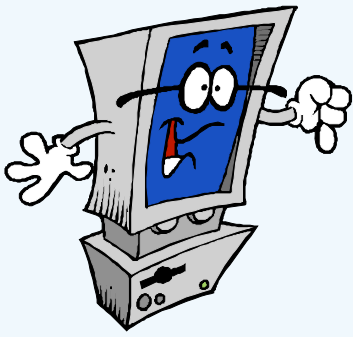


Me and My Memory



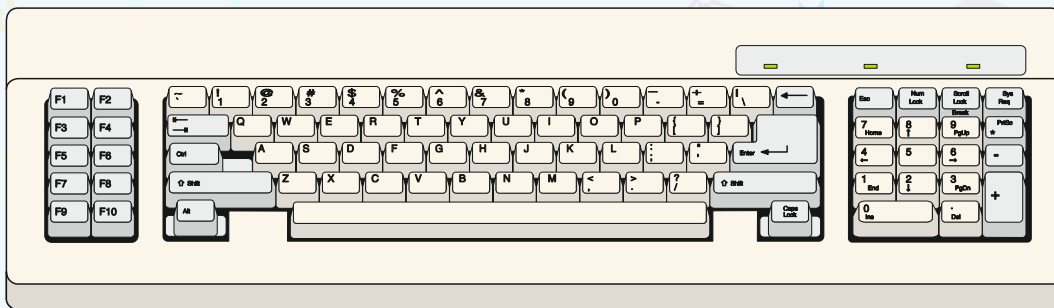
I am an electronic device. I accept data as input and process it. After processing the data, I give output on screen or on the paper. I can also store large amount of data in memory. I have a high speed and I give you accurate results. You already know about me and my parts. I have different parts like keyboard, mouse, CPU, monitor, printer etc. In this unit we will discuss more about parts like CPU (Central Processing Unit) and memory of the computer.





I have different parts like keyboard, mouse, monitor, printer. All the parts have their different work, like –

Keyboard : It is a very important device. It looks like a typewriter. It is used to give input to me. Suppose you want to give any numerical and alphabetical data to me, then keyboard will be used to give instruction or data. It has different types of keys like Alphabet, Numeric, Functional and Symbols keys. The keyboard consists of more than 100 keys, about 101 to 105.



Mouse : It is used to give command to me. Mouse is called as a pointing device. It helps us to point the object on the screen and to draw the picture on me. It has three buttons left, centre and right. It is placed on the mouse pad.



Monitor : Monitor is a very important part of me. It is an output device. It is used to see the output on the screen. It looks like a TV. You can see movies or play games on the monitor. Screen of the monitor is divided into 24 rows and 80 columns. There are two types of monitors : (1) Colour, (2) Black & White.

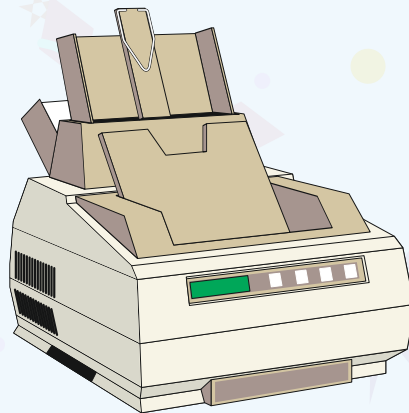


Speaker : Speaker is also an output device. It is used to listen the voice that generate in me. Suppose, you are watching a movie on me then to listen the voice speaker is used.

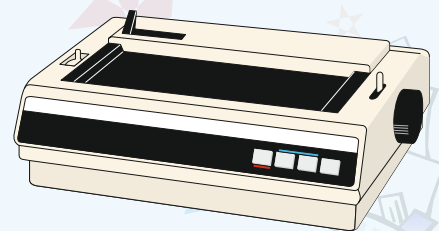
Printer : Printer is also an important device. It is an output device. It is used to see the output on the paper. The print of a document on the paper is known as the hard copy. Different types of printers are used to print the document. A printer can print in colour as well as black and white.



Inkjet



Laser



Dot Matrix

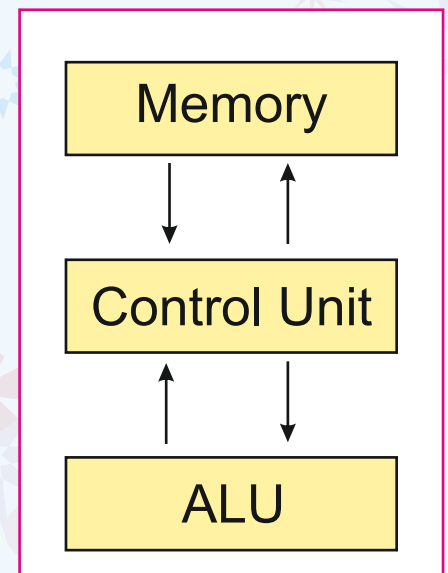
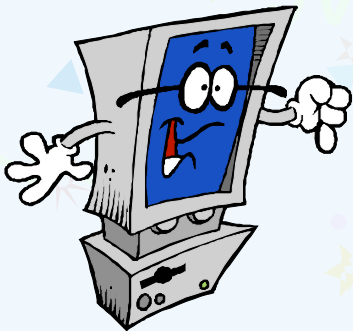
CPU : CPU is my main part. It is my brain. It has memory, Control Unit and Arithmetic logic Unit (ALU). The CPU is used to process the input given by input devices for a meaningful output. CPU has three main part -

1. **Memory** : This unit is used to store the data or information either permanently or temporarily

2. **Arithmetic Logic Unit** : It is my main part. it does all the calculations and also takes logical decisions.

3. **Control Unit** : This unit controls all the functions of me.

The structure of the CPU is –



CPU

Memory : Memory is used to store the data for any period of time. My memory is an artificial memory. You can use as much powerful memory as per your requirement.

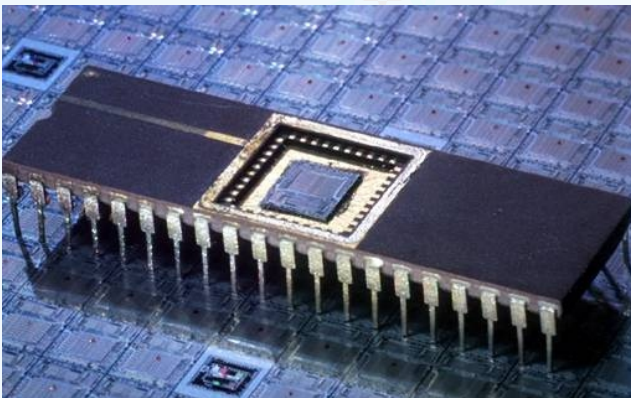
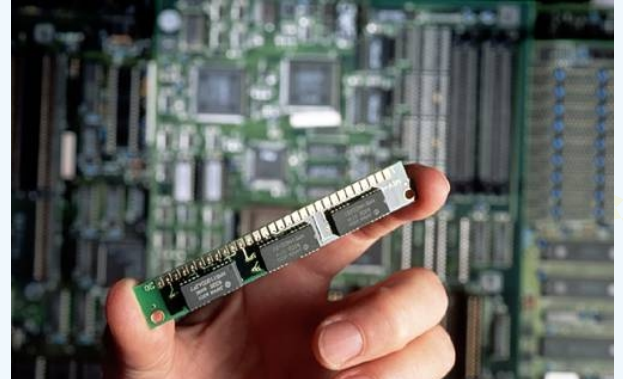
My memory can be divided into two types :

- (1) Primary memory
- (2) Secondary memory

Primary Memory : My main memory is known as primary memory. It is of two types :

- (1) RAM (Random Access Memory)
- (2) ROM (Read Only Memory)

RAM : RAM is a Random Access Memory. It is a temporary memory. It will not store the contents Permanently. When you switch me off, the content of RAM will be deleted.



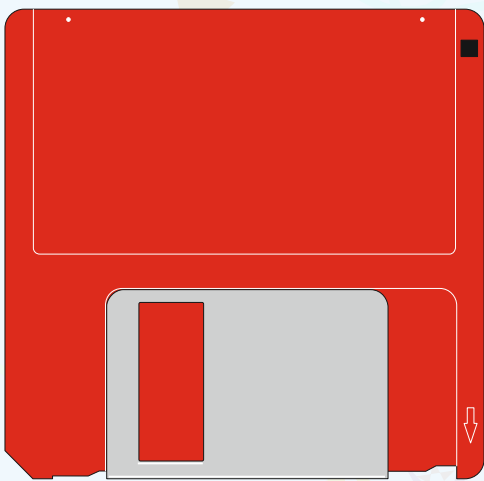
ROM : Rom is a Read Only Memory. It is a permanent memory. It stores the contents permanetally.

Secondary Memory : Secondary memory is an external storage media for storing the information permanetally. The external storage devices are :

- Hard Disk
- Floppy Disk
- Compact Disk
- Pen drives

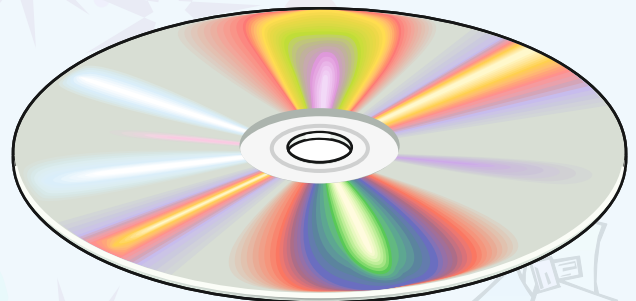


Hard Disk : Hard disk is a secondary storage device which resides inside CPU. It is the most basic type of storage media. It stores more data and information as compared to other disks. Different sizes of Hard disk is available. Like 10 GB, 20 GB 40 GB and 80 GB. You can use more than single hard disk in me.



Floppy Disk : It is also a secondary storage device. These are plastic disks packed in a square plastic jacket. It is a portable disk used to copy data from one computer to another. The Maximum capacity of a floppy disk is 1.44 MB.

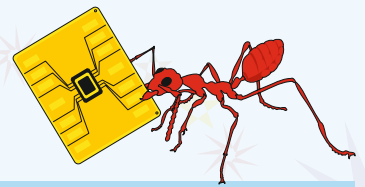
CD (Compact Disk) : CD is also a secondary storage device. It is an optical disk with storage capacity upto 700 MB (equal to about 480 floppy discs). it is generally used to store the multimedia information like softwares, games, movies, etc. It is a portable disk. In CD, data once written can't be changed. Now a days



rewritable CD's are also available in the market in which data can be re-written. But for writing on them, CD writer is must.

Control Unit : The control unit decides, what to do and where? It allots the works to concerned sections.

ALU (Arithmetic and Logic Unit) : Arithmetic and Logic Unit is used to solve all arithmetic (calculations) and logical problems.



Q.1. Write the Answer in YES or NO.

1. Keyboard is used to give the input.
2. Mouse is called a pointing device.
3. The screen of the Monitor has 24 rows and 80 column.
4. We can receive a hard copy by speaker.
5. Floppy is a primary storage device.
6. The data stored in CD is measured in MB (Mega Byte)

Q.2. Write the Answer of following questions.

1. What do you mean by control Unit ?

.....

2. What is Primary Memory ?

.....

3. Write the name of Primary storage device.

.....

4. What is meant by external storage media ?

.....

Q.3. Fill in the suitable words.

1. Printer is used to receive copy of data.

2. The Main Memory is known as

3. RAM stands for Random

4. The external storage media is known as

5. ALU stands for

Things To Do :

Collect newspaper and magazine cuttings about the computer and make a collection book.

